

ORDINANCE NO. 5765

AN ORDINANCE TO LEVY ASSESSMENTS AGAINST PROPERTY SPECIFICALLY BENEFITED BY SEWER AND WATER CONNECTIONS AND THE ASSESSMENT OF SEWER, WATER, PARKS, AND TRANSPORTATION SYSTEM DEVELOPMENT CHARGES FOR PROPERTY DESCRIBED AS TAX LOT 3900, OF PARCEL 10S-04W-36BB; AND DECLARING AN EMERGENCY.

WHEREAS, the Sewer and Water System Development Charges, as referred to in this ordinance, are to provide sewer and water connections to serve the structures on this property; and

WHEREAS, the Transportation System Development Charge is intended to assess charges for future expansion or capacity increases to the system, and is aimed at providing additional levels of services to the existing road network; and

WHEREAS, the Parks System Development Charge is intended to impose a portion of the public cost of capital improvements for parks upon properties where developments create the need, or increase the demand for park improvements; and

WHEREAS, these charges will be assessed on the property described as Tax Lot 3900, of Parcel number 10S-04W-36BB, .23 acres. (See attached **Exhibit "A"**)

NOW THEREFORE, THE PEOPLE OF THE CITY OF ALBANY DO ORDAIN AS FOLLOWS:

Section 1: The Sewer, Water, and Transportation System Development Charges and the assessments for the same will be levied according to the provisions of Albany Municipal Code, Chapter 15.16. The Parks System Development Charge and the assessment for the same will be levied according to the provision of Albany Municipal Code, Chapter 15.20.

Section 2: The total cost of the Sewer, Water, Transportation, and Parks System Development Charges is \$8,382.00.

(See attached assessment sheet)

Section 3: The City Recorder is hereby directed to enter a statement of the assessments as provided above in the docket of the City liens and give notice thereof as provided by law.

Section 4: Inasmuch as this ordinance is necessary for the immediate preservation of the peace, health, and safety of the City of Albany, Oregon, an emergency is hereby declared to exist; and this ordinance will be in full force and effect immediately upon passage by the Council and approval by the Mayor.

Passed by the Council: October 26, 2011

Approved by the Mayor: October 26, 2011

Effective Date: October 26, 2011


Mayor

ATTEST



City Clerk

Owner of Record

Property Description

Assessment Description

Mike Jackson
2445 NW 29th ST
Corvallis, OR 97330

Acreage: .23 acres
10S 04W 36BB 03900

Parks SDC
Amount: \$ 2,196.00
Acct # psdc2011-0001-000

Mike Jackson
2445 NW 29th ST
Corvallis, OR 97330

Acreage: .23 acres
10S 04W 36BB 03900

Sewer SDC
Amount: \$2,402.00
Acct # sssc2011-0001-000

Mike Jackson
2445 NW 29th ST
Corvallis, OR 97330

Acreage: .23 acres
10S 04W 36BB 03900

Transportation SDC
Amount: \$ 1,734.00
Acct # stsd2011-0002-000

Mike Jackson
2445 NW 29th ST
Corvallis, OR 97330

Acreage: .23 acres
10S 04W 36BB 03900

Water SDC
Amount: \$ 2,050.00
Acct # wsd2011-0001-000

Report Total: \$8,382.00

Exhibit "A"

THIS MAP WAS PREPARED FOR ASSESSMENT PURPOSE ONLY

N.W.1/4 N.W.1/4 SEC.36 T.10S. R.4W. W.M.
BENTON COUNTY
1" = 100'

0 50 100 200 Feet

10436BB

REV. 02-18-2009

CANCELLED:

- 100
- 200
- 300
- 301
- 400
- 401
- 500
- 501
- 600
- 700
- 800
- 900
- 1000
- 1100
- 1200
- 1300
- 1400
- 1600
- 1700
- 1800
- 1900

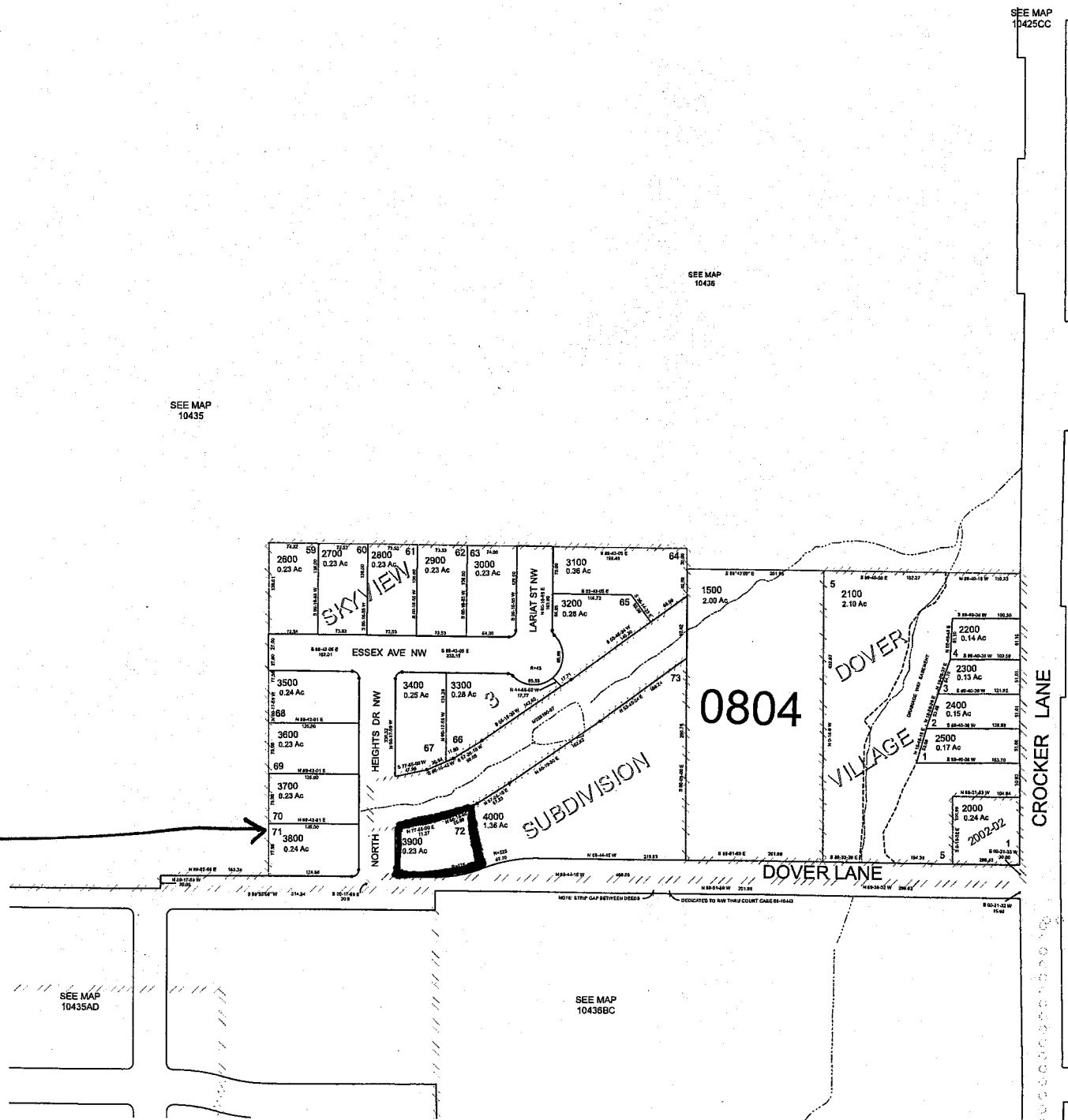
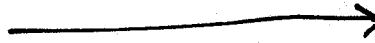
SEE MAP 10435

SEE MAP 10406

SEE MAP 10425CC

SEE MAP 10436BA

10S 4W 36BB
Tax Lot
3900



10436BB